

PATHFINDER CENTER

protecting and finding purpose for victims of human trafficking







OUR MISSION

of Pathfinder Center

To provide a place of refuge for victims of human trafficking from all over South Dakota. To promote the growth and development of those we serve by empowering them to experience healing and wholeness, while ensuring that each woman gains a sense of self-worth and the capacity to achieve their full potential.

DEFINITION

of Human Trafficking

Human trafficking is the illegal movement of people, typically for the purposes of forced **labor** or commercial **sexual exploitation**.

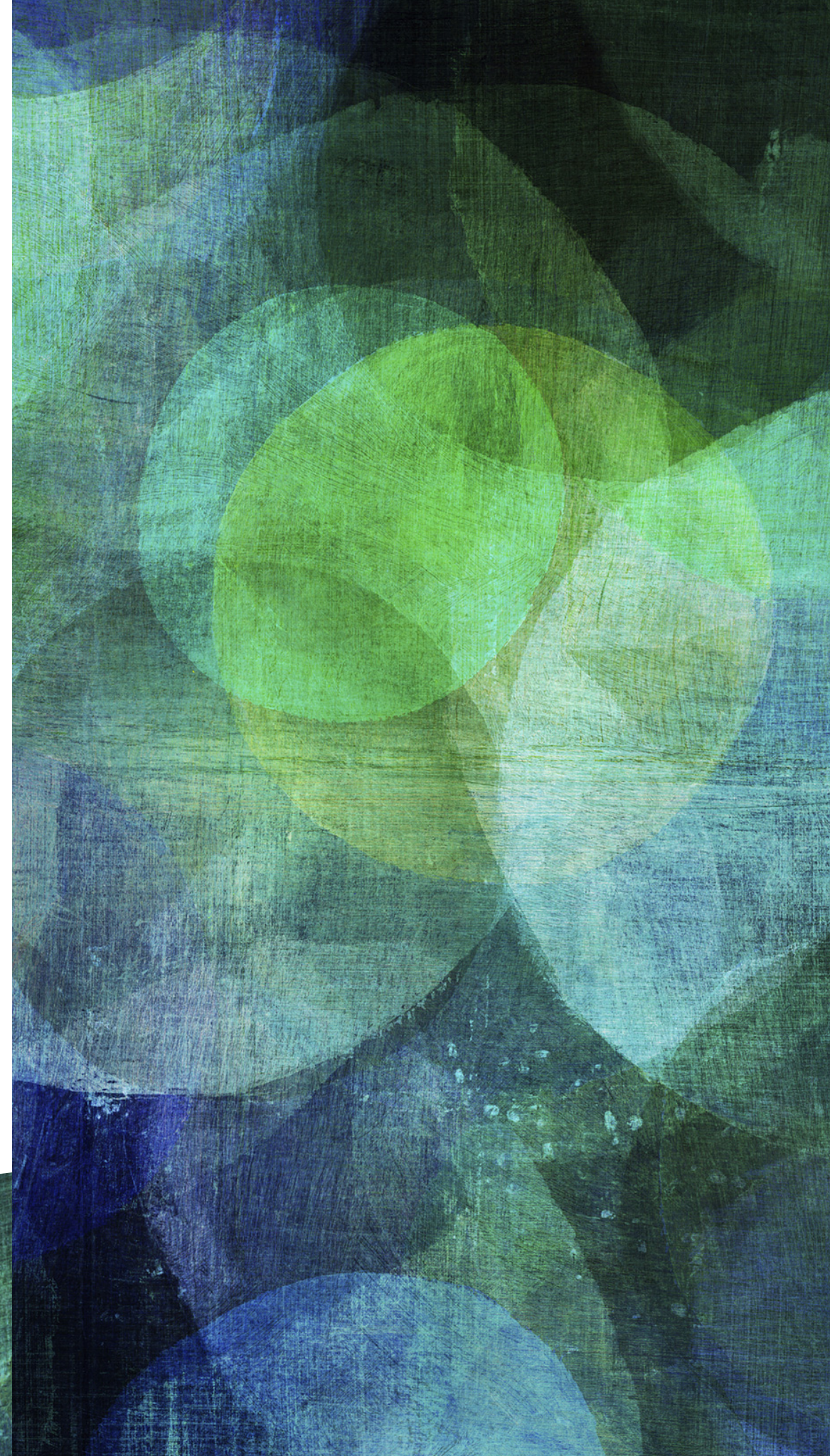


DEFINITION

of Labor Trafficking

The recruitment, harboring, transportation, provision, or obtaining of a person for labor or services, through the use of force, fraud, or coercion for the purposes of subjection to involuntary servitude, debt bondage, or slavery.

- Domestic Work
- Agriculture
- Travel/Sales
- Restaurant/Food Service
- Health/Beauty

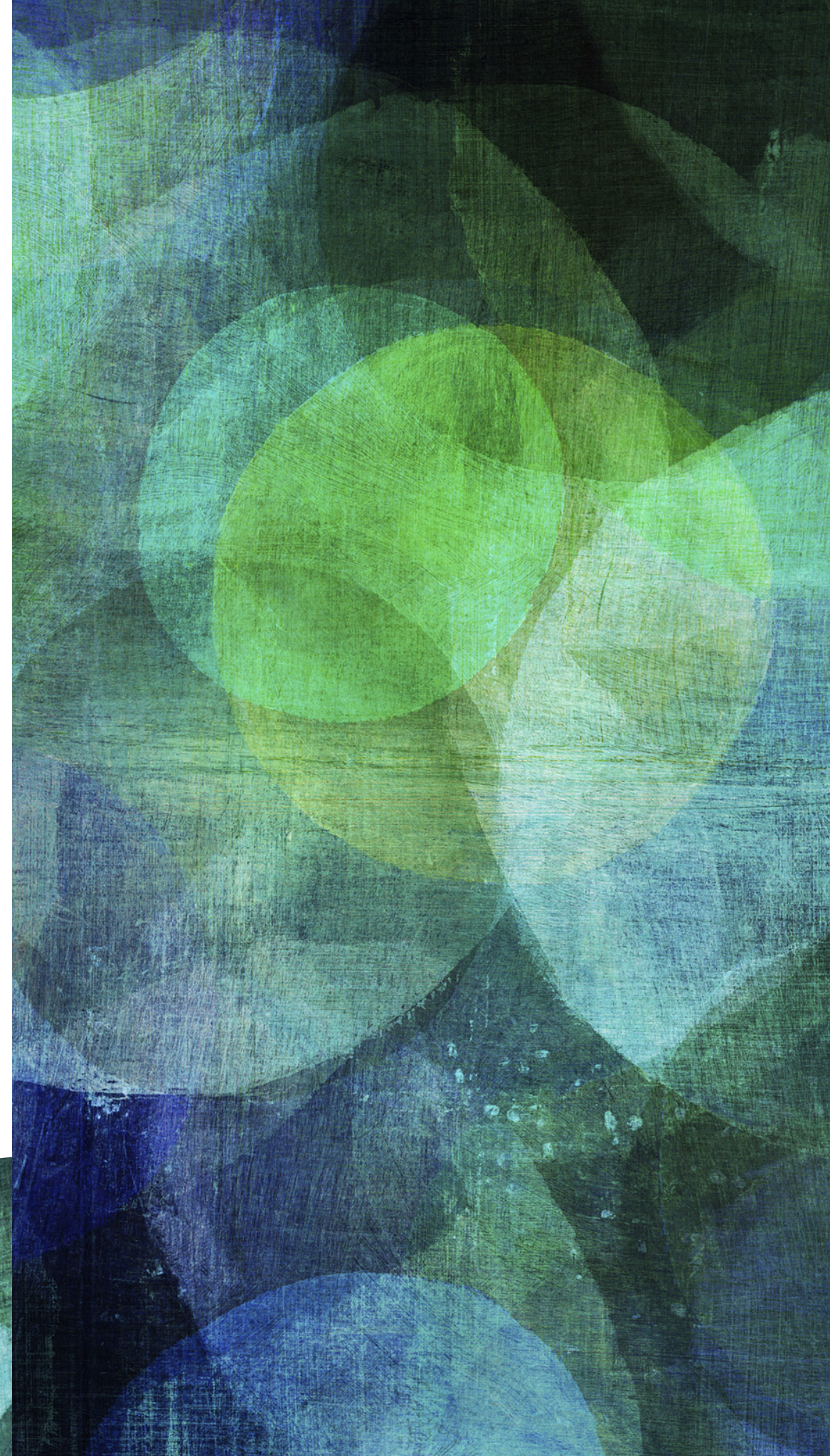


DEFINITION

of Sex Trafficking

The recruitment, harboring, transportation, provision, or obtaining of a person for the purposes of a commercial sex act, in which the commercial sex act is induced by force, fraud, or coercion, or in which the person induced to perform such an act has not attained 18 years of age.

- Commercial/Brothels
- Hotel/Motel
- Online/Advertisements
- Residential Brothels
- Street-based





OVERVIEW

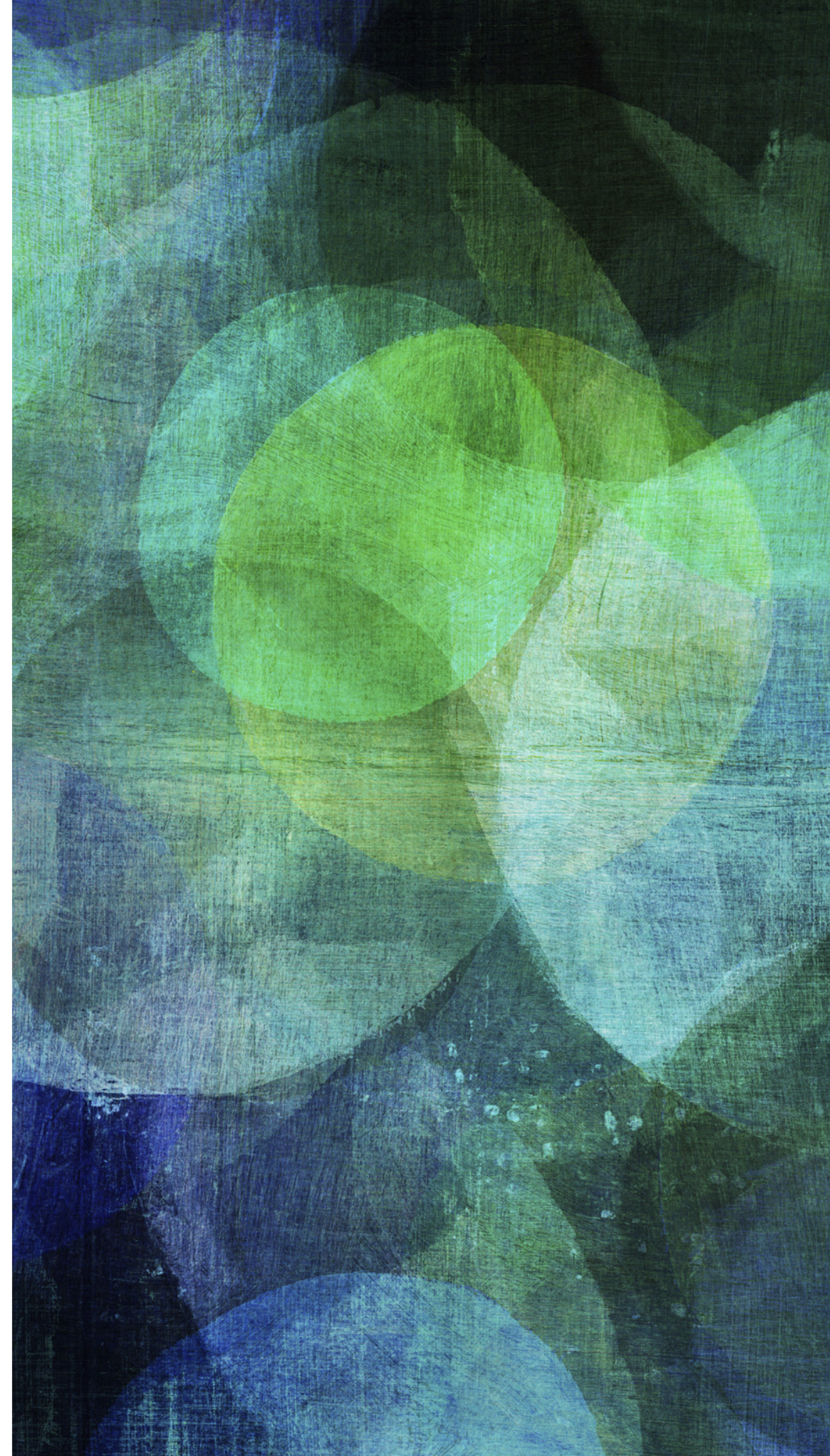
of Human Trafficking Stats

- Human trafficking is a form of modern slavery a multi-billion dollar criminal industry that denies freedom to 20.9 million people around the world.
- In the past few years, the FBI has focused on 50 cases of human trafficking in South Dakota
- Three of those 50 cases landed “life sentences” of the sex traffickers involved; One of those three received “four life term” sentence.
- Traffickers target areas in South Dakota that are considered “poor”, seeking out emotionally and economically vulnerable populations.

OVERVIEW

of Human Trafficking

- Children involved in the sex trade, adults over the age of 18 who are forced, coerced or deceived into commercial sex acts, and children and adults compelled into different forms of labor.
- Women and children are particularly vulnerable to human trafficking. When dealing with trafficking cases, safety must guide all efforts.
- Victims must be protected, physically and psychologically, from those who have trafficked them and provided with placements and services specifically designed to address the trauma they have endured.





OVERVIEW

of Human Trafficking

- Human Trafficking is a market-driven criminal industry.
- There is supply and demand for cheap labor and commercial sex.
- The risk for traffickers is **low** due to lack training, awareness, and lack of laws.
- Low risk offers traffickers more opportunity, with little risk of getting caught.
- The profit for traffickers is **high**. The market for sex with children and adults is in demand. The need for cheap labor is there. Since there is a demand, the traffickers supply.



OVERVIEW

of Human Trafficking

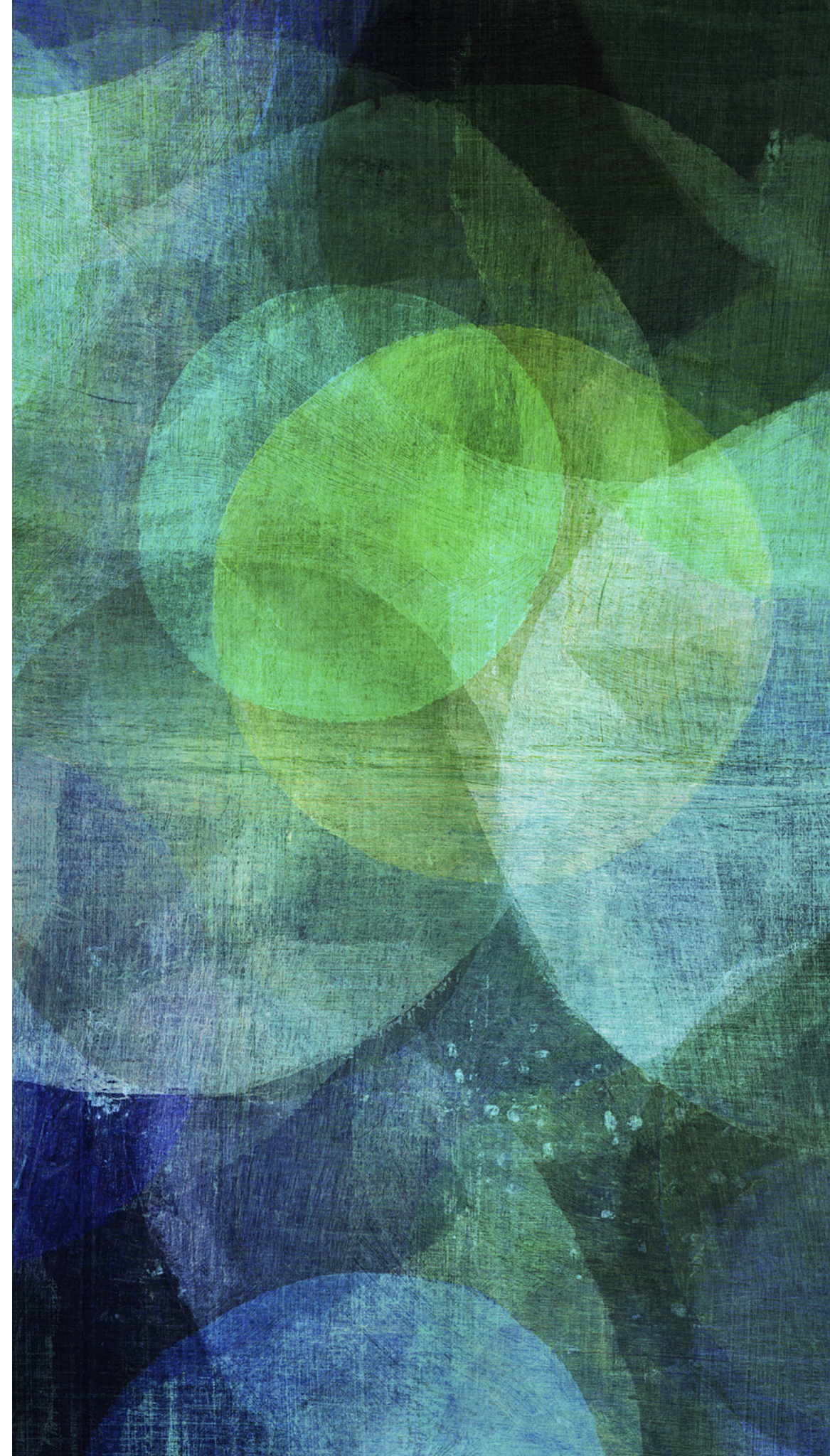
How to decrease trafficking:

- Educate law enforcement and those in the community to be aware, identify, and report any signs of suspicious activity.
- Create laws to protect those who are being trafficked and to criminally punish traffickers.
- Create more programs and organizations that offer services to victims of human trafficking.
- Stop the societal stigma.
 - Ex: She is just a prostitute and she deserved it.
 - Ex: He is “illegal” in this country anyway. He should feel lucky to even have a job.

NEEDS

of Human Trafficking Victims

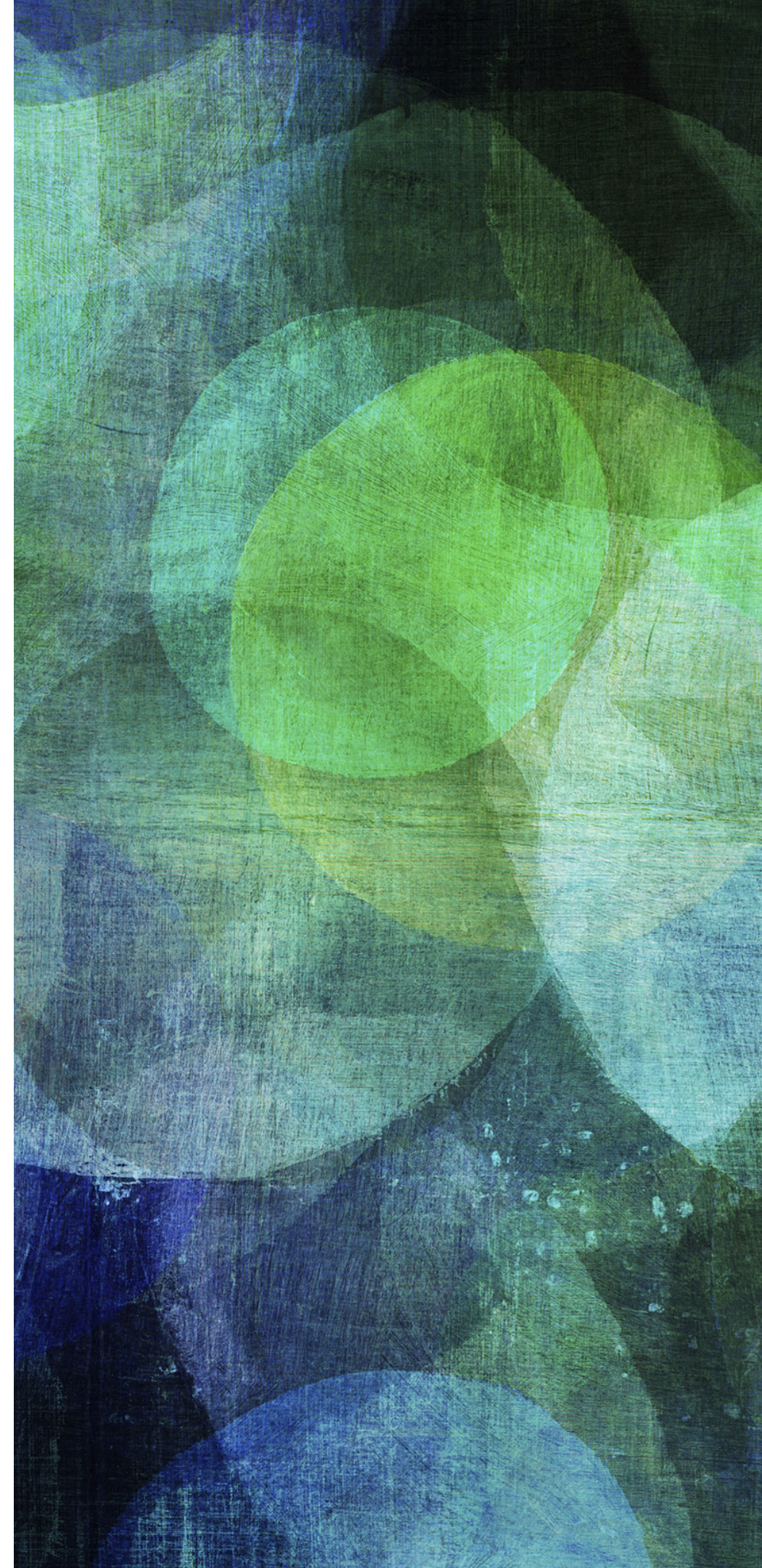
- Individuals who have experienced violence and trauma in the past are more vulnerable to future exploitation
- The psychological effect of trauma is often long-lasting and challenging to overcome.
- Victims of domestic violence, sexual assault, or social discrimination may be targeted by traffickers, who recognize the vulnerabilities left by these prior abuses.
- Violence and abuse may be normalized or beliefs of shame or unworthiness lead to future susceptibility to human trafficking.



NEEDS

of Human Trafficking Victims

- The needs of trafficking victims are among the most complex of crime victims
- It's important to have a multidisciplinary approach to address severe trauma and medical needs, immigration and other legal issues, safety concerns, shelter and other basic daily needs, and financial hardship.
- The needs are real and immediate action is taken.
- Trafficking victims come from all levels of education and socio-economic statuses (SES).
- Anyone can be a victim of human trafficking; however, victimization is higher in those populations considered “runaways” or those who are homeless.



OVERVIEW

of Pathfinder Center & Wiconi Wawokiya

Wiconi Wawokiya, Inc (Helping Families) has been in operation for over 30 years, providing shelter, safety, support, and healing to victims of domestic violence and sexual assault located on the Crow Creek Indian Reservation.

There are four organizations under Wiconi Wawokiya, Inc:

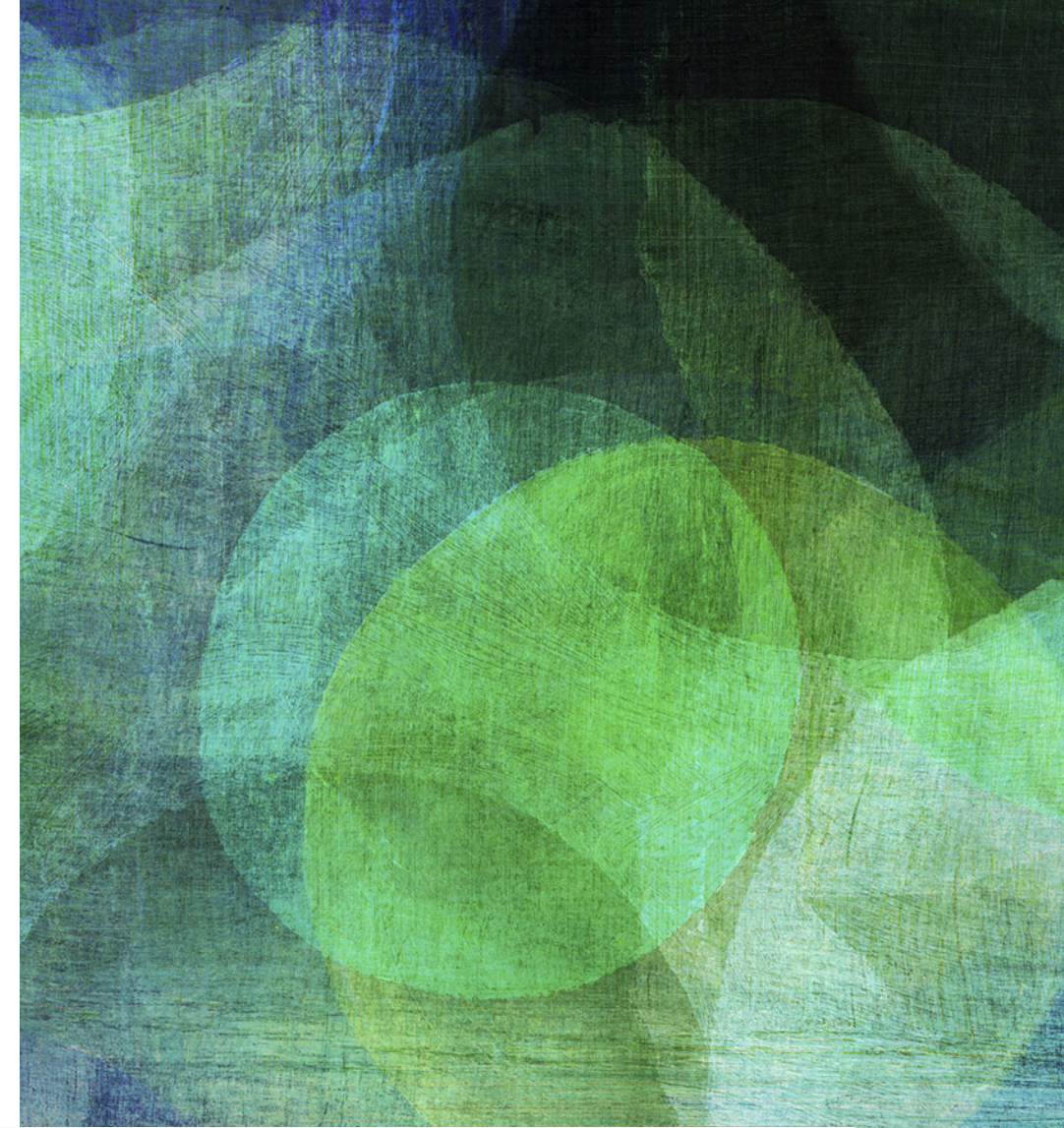
- **Project SAFE** - Domestic Violence Shelter, Fort Thompson, South Dakota
- **Children's SAFE Place** - Accredited Child Advocacy Center, Fort Thompson, South Dakota
- **Mita Maske Ti Ki** - Domestic Violence Shelter, Sioux Falls, South Dakota
- **Pathfinder Center** - Human Trafficking Refuge, Central South Dakota



OVERVIEW

of Pathfinder Center & Wiconi Wawokiya

- Pathfinder Center is a 14 bedroom place of refuge for victims of human trafficking
- Pathfinder Center is a program of Wiconi Wawokiya (Helping Families); a 501c3 non-profit organization, located in Central South Dakota.
- Safe, secure, confidential place for women and children to heal from the effects of trafficking.





PROVIDED

By Pathfinder for Victims

Crisis Intervention and Counseling

Emergency Shelter and Referrals

Spiritual Support and Healing

Medical Advocacy

Longterm Mental Health Care

Safety Planning

Food and Clothing

Case Management

Referrals to Churches

Job Training and Education

Employment Assistance

Transportation

OBJECTIVE

of Pathfinder Center

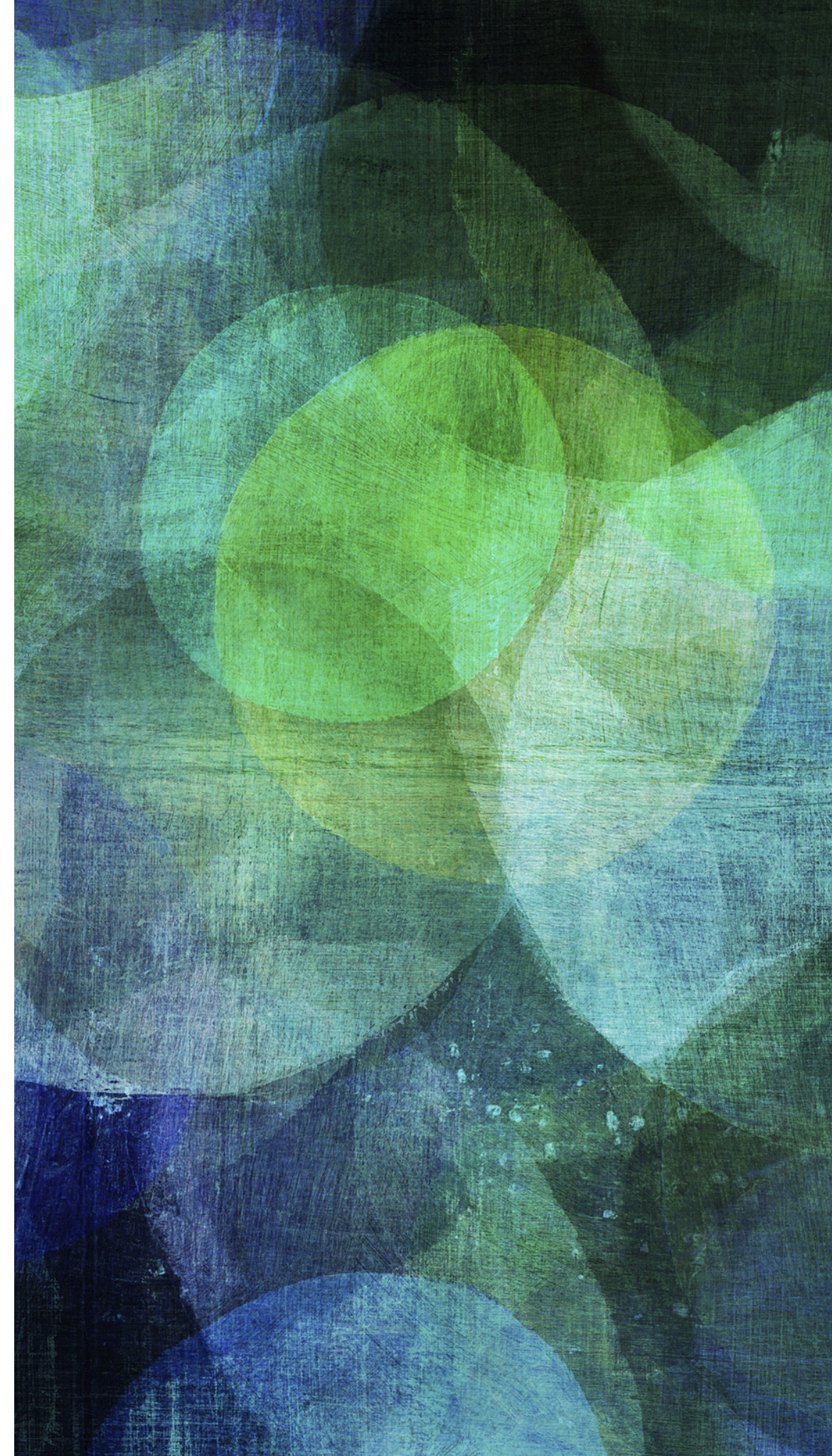
- Have stable and safe housing
- Have protection from traffickers
- Become apart of a safe, healthy community.
- Have professional guidance and assistance while addressing complicated and stressful issues, such as legal, medical, and emotional support.
- Will be empowered by discovering and identifying their strengths.



OBJECTIVE

of Pathfinder Center

- Learn life skills, such as communication, independent living, boundaries, understanding and addressing trauma, and safe-decision making.
- Receive addiction and mental health counseling.
- Receive clothing, food, shelter, hygiene, and crisis support while at Pathfinder.
- Receive job skills training, GED classes, and transportation for job interviews
- Receive transportation to appointments, interviews, and medical appointments.
- Receive spiritual healing and guidance.



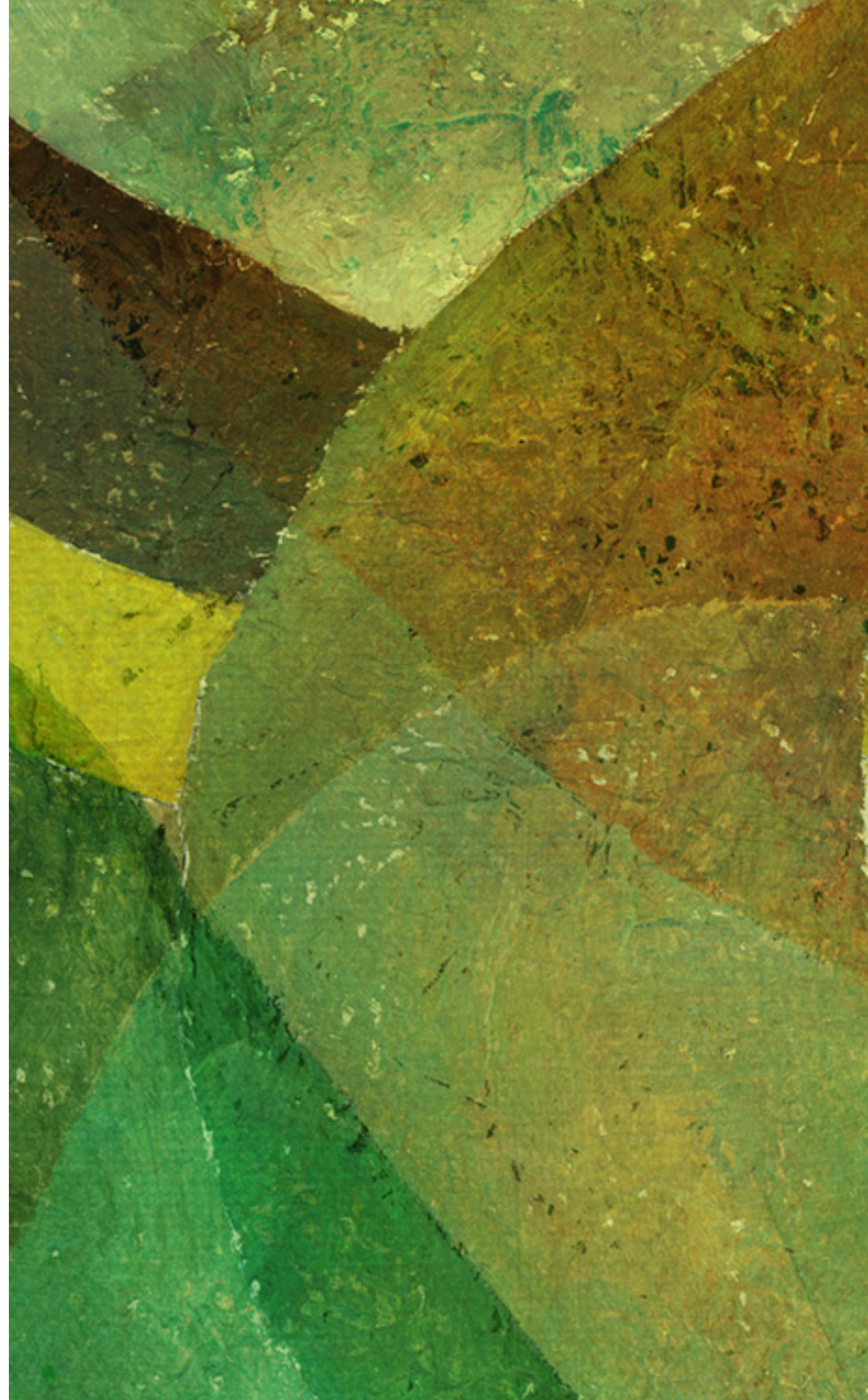
OUR VISION

"It Takes a Village..."

One of our many visions is to partner with individuals, businesses, organizations, and churches all across South Dakota.

When victims have decided it is time to move forward from the Pathfinder Center, we want to provide resources of support and love.

We ask that you consider sponsoring a woman and her children as they transition from the Pathfinder Center into a new setting; a new and healthier world.





SPONSOR

"It Takes a Village..."

Sponsoring a woman/woman and her children would provide a needed support that will set her up for success and a positive transition from the Pathfinder Center.

Sponsoring would include:

Using resources and connecting women to possible jobs within the community.

Helping to locate furniture and possible apartment and rentals in your area.

Providing assistance with paper work, applications, and other forms that may need to be completed.

Helping with occasional transportation to and from job interviews, college, or GED classes.

Providing spiritual and emotional guidance and support.

Helping integrate the woman/woman and children into the community while helping to provide a healthy support system.

DONATIONS

Other Ways to Help

Donations of \$1000 and over will have their name placed on a plaque and given special recognition and honor. Donations are tax deductible.

Other items that we are in need of for the general areas, such as the main kitchen are:

- refrigerator
- microwave
- new or used computer/laptops
- kitchen table and chairs
- dishes/pots and pans
- area rugs
- silverware
- plates
- room decor
- gift cards
- play equipment
- children's books



EMPOWERMENT

determination

GROWTH

SELF-WORTH

development

CONFIDENCE



Will you help us?